

Prayer

- A B 2601 "Home Team" Prayer Ministry
- A B 2602 Prayer Shawl Ministry
- A B 2603 Prayer Chain - Phone
- A B 2604 Prayer Chain - E-mail
- A B 2605 Hedge Prayer Ministry
- A B 2606 Pray for Missionaries
- A B 2607 Chapel Intercessor
- A B 2608 Home Intercessor

REACHING OUT IN LOVE

Evangelism

- A B 2701 Mug Ministry
- A B 2702 Assist with Organizing New Member Orientation Welcome Dinner
- A B 2703 Assist with Coffee with the Pastor
- A B 2705 Greeter at Worship Service
- A B 2707 Guest Follow-up
- A B 2708 Sponsor a New Member

Missions

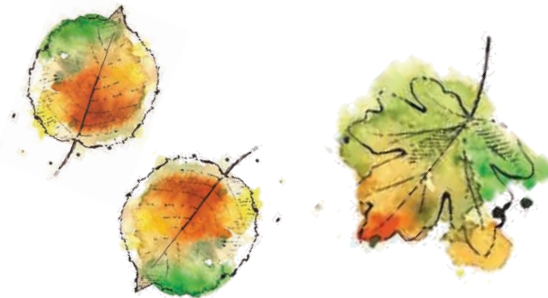
- A B 2801 Table of Grace
- A B 2802 Backpack Ministry
- A B 2803 Community Thanksgiving Meal
- A B 2804 Food for Seniors
- A B 2805 Sager-Brown Mission Trip
- A B 2806 Habitat for Humanity
- A B 2807 United Methodist Outreach Thrift Store
- A B 2808 Operation Christmas Child Relay Center
- A B 2809 Garland Co. Jail Ministry
- A B 2810 Homeroom Parents

- A B 2811 Ozark Mission Project
- A B 2812 Wesley Foundation
- A B 2813 Tanzania Covenant Missionary
- A B 2815 Special Mission Projects (please check the projects which interest you)
 - Blessing Box
 - Drop-in Room at Hot Springs High
 - Ronald McDonald House
 - Teen Challenge
 - Potter's Clay
 - Samaritan Ministries
 - Ouachita Children's Center

GENERAL ADMINISTRATION

Office Angels

- A B 2901 Visual Media
- A B 2902 Writing and Publicity
- A B 2903 Photography
- A B 2904 Receptionist in Church Office
- A B 2905 Newsletters for Mailing
- A B 2906 Clerical Work for Special Projects
- A B 2907 Administrative/Clerical Support for the following ministry



God's House Helpers

- A B 3001 Care of the Grounds
- A B 3002 "Adopt a Room"
- A B 3003 "Green Church"

Miscellaneous

- A B 3101 Special Skills

- A B 3102 Where the Church Needs Me
- A B 3103 Create a New Ministry



Every Member
in Ministry
Commitment of Giving
2021



Building Faith,
Bringing Hope,
Reaching Out in
love

Grand Avenue
United Methodist Church

841 Quapaw Avenue
Hot Springs, AR 71913
501-623-5626
gaumch.org

Commitment of Giving For Christ and His Church

Gifts

As an expression of my faith and commitment to Christ and his church:

I am not yet a tither, but I will move toward that goal.

I will commit 1/10 of my income to God's work.

I want to grow beyond God's minimum.

My Commitment is \$ _____

per week per month per year

This commitment may be revised at any time.

Date: _____

Name(s): _____

Signature: _____

“Choose this day whom you will serve...but as for me and my household, we will serve the Lord.”

Joshua 24: 15

Name(s): _____

Prayer

I/We commit to pray for Grand Avenue United Methodist Church _____ times per month.

Presence

I/We commit to be present at Grand Avenue United Methodist Church services _____ times this year.

Witness

I/We will share my faith story with _____ people this year.

I/We will invite a friend to church _____ times this year.

Service

I/We commit to participate in the following ministries to the glory of God. (Recorded on the rest of this card.)

Circle Commitments:

Person A _____

Person B _____

BUILDING FAITH

With Adults

- A B 2101 Lead Adult Sunday School
- A B 2102 Substitute Leader for Adult Sunday School
- A B 2103 Lead Adult Bible Study or Small Group Study

With Children/Youth

- A B 2201 Lead Children or Youth Sunday School
- A B 2202 Substitute Leader for Children or Youth Sunday School
- A B 2203 Lead or Assist with Early Christian Awareness
- A B 2205 Lead or Assist with Special Kids' Events
- A B 2206 Nursery Care Giver

BRINGING HOPE

Worship

- A B 2301 Serve on Altar Guild
- A B 2302 Prepare Communion for Worship
- A B 2304 Serve Communion at Worship Service
- A B 2306 Usher for Worship Service
- A B 2308 Acolyte or Cross Bearer for Worship Service
- A B 2310 Lay Reader for Worship Service
- A B 2311 Assist with Seasonal Decorations
- A B 2312 Sound Technician for One or More Services

- A B 2314 Computer Technician for Worship Service
- A B 2315 Worship Drama, Dance, & Staging
- A B 2316 Children's Sermon for 10:45 Service

Music

- A B 2401 Chancel Choir at 10:45
- A B 2402 Jubilee Handbell Choir
- A B 2403 Provide Vocal or Instrumental Music at Worship or Other Services
- A B 2404 Provide Special Instrumental/Vocal Music

Congregational Care

- A B 2501 Nursing Home, Assisted Living, Convalescing & Homebound Visitation
- A B 2502 "TLC" Telephone Calls, Letters, and Cards for Members in Need
- A B 2503 Hospital and Rehabilitation Visitation
- A B 2504 Bereavement Ministry
- A B 2505 Bereavement Reception Ministry
- A B 2506 Bouquets and Buds Ministry
- A B 2507 Bread and Cup Ministry
- A B 2508 Attendance Ministry
- A B 2509 Auto Angels
- A B 2511 Meals and Potlucks
- A B 2512 Sunday Morning Coffee

